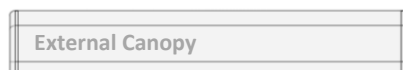
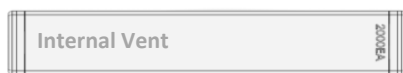




Modular Vent

Operation & Maintenance Manual



2000 Modular Vent



4000 Modular Vent

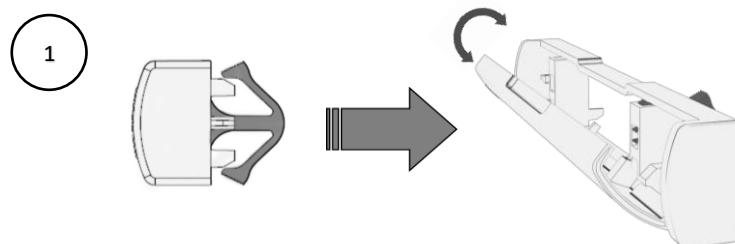


Figure1. Modular Vent Internal Lid

Operation:

- Open and close the internal ventilator by adjusting the lid to regulate the incoming airflow. *figure1.* 4000 version has two adjustable lids & 6000 version 3, etc, which operates independently to each other.

Maintenance:

- Every 3 months gently brush the external canopy and internal vent with a hand brush to remove any cobwebs and wipe down with soapy water using a damp cloth.
- Do not use abrasive cleaning products or abrasive cleaning materials.
- Where possible, gently open the internal vent and vacuum the cut-out rout clearing out any dust and debris for efficient performance.