



Window component  
of the year

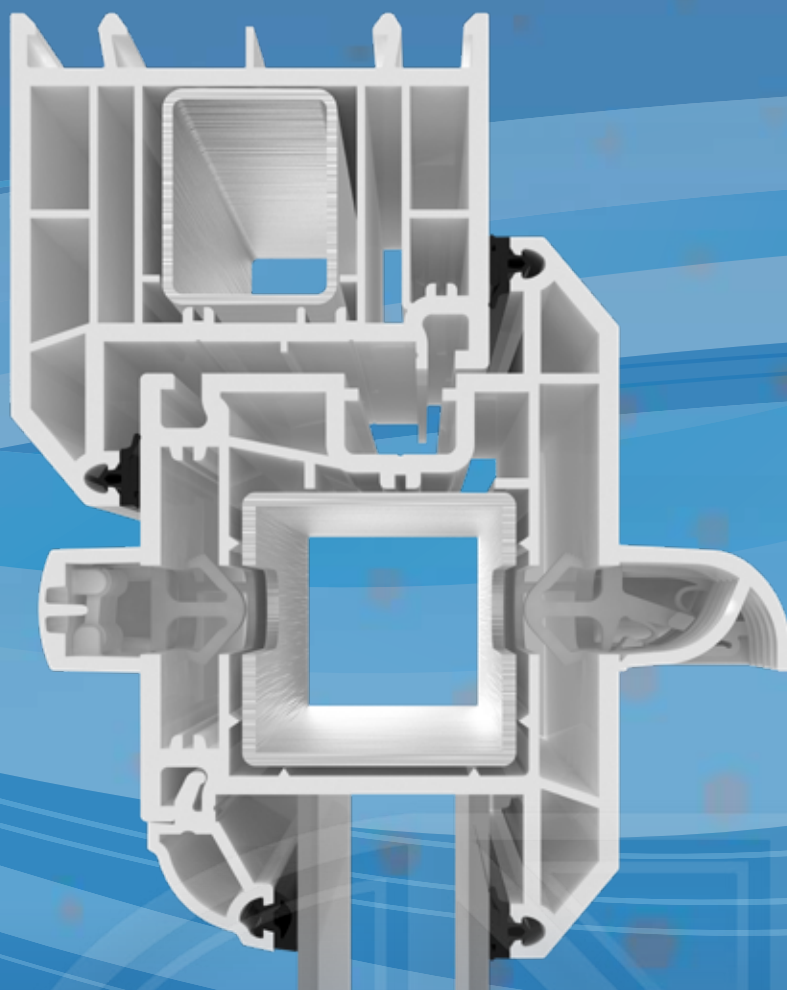


New product of the  
year - Link Vent 4000  
Window component  
of the year



The Plastic Injection Moulders

# LINK VENT COMPACT QUIET QUICK DISCRETE



The next generation of Glazparts trickle vent range continues to evolve with the development of the Link Vent.

With its more compact, sleek design the Link Vent canopy extends a mere 25mm. The design benefits from its aerodynamic features which direct the air flow efficiently through the vents pathway, developed to meet the minimum requirements of the building regulations Part F1:2010.

Improved Db noise reduction to new levels of performance whilst retaining the aesthetically pleasing and patented ventilator design which

assists in reducing the visibility of a trickle vent on your windows.

Innovative design is also mixed with availability in almost 30 solid colour or wood grain finishes. Then add the options for canopy vacuum foiling to match your linear wrapped profiles, spraying to ANY RAL number; the Link Vent now comes in 1,000's of colour options. You can even mix and match when your customers select window designs with colour foiled profile externally and white internally.

But how could we improve the product even more if you're an

installer or fabricator? There are still NO end caps to loose or break... fixing is within the products design.

The Link Vent is supplied with fixing clips fitted! So, you can just push fit the vent into place when installing... in seconds. The clips automatically centre the vent in the rout aiding location ensuring it is fitted level on the window.

If you still prefer to screw fix your trickle vents, just pop out the fitted screw caps before fitting and fix as normal.

[www.glazpart.com/link-vent](http://www.glazpart.com/link-vent)



Window component  
of the year

# Link Vent 2500

## 2500 VENT

Equivalent Area 2500mm <sup>2</sup> EQA	Equivalent Area (Route Height) 13mm 2500mm <sup>2</sup> EQA 10mm 2000mm <sup>2</sup> EQA	Free Area 2518mm <sup>2</sup> 2019mm <sup>2</sup>	Acoustic D n,e,w (+/-) - vent open Route Height 13mm: 34* (-1;1) Route Height 10mm: 35* (-1;1)	Acoustic D n,e,w (+/-) - vent closed Route Height 13mm: 46* (-1;1) Route Height 10mm: 40* (0;0)
--	--	---	--	---

Internal				External								Ventilator			
Ventilator				Canopy				Grille (Timber, Sliding door, Sash)							
H (mm)	L (mm)	D (mm)	Weight (gram)	H (mm)	L (mm)	D (mm)	Weight (gram)	H (mm)	L (mm)	D (mm)	Weight (gram)	Attachment type	Route H (mm)	Route L (mm)	Stand W (mm)
18.5	236.5	15	30	18.5	236.5	25	30	26	236.5	2.5	11	Clip or Screw	13 or 10	1x204	na

EQUIVALENT AREA – 2500 vent (2500EQA)

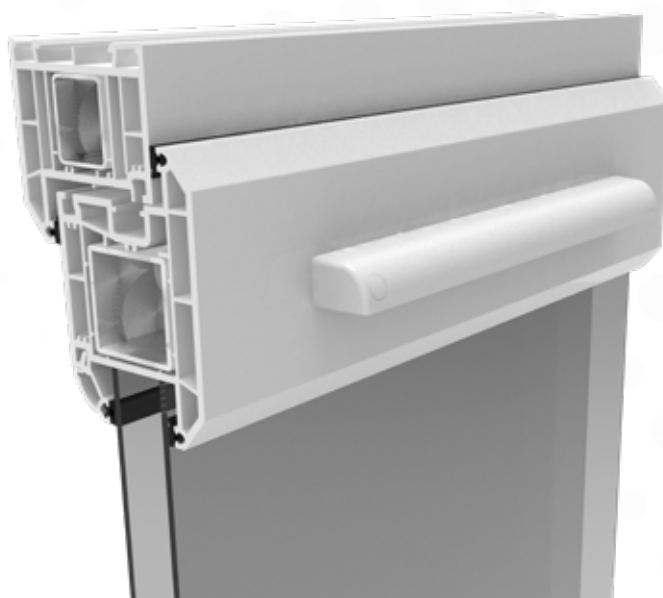
AIR LEAKAGE – 2500 vent 0.39 m<sup>3</sup>/h 0.11 L/s

WATERTIGHTNESS TEST TO BS EN 13141-1 – 2500 vent – Resistant to water penetration using method 1A meeting Class 9A requirement up to and at 600pa in BS EN 12208 - 13mm (900pa on a 10mm route)

DB RATING – BS EN ISO 10140-1:2016 (Earlier standards are withdrawn) and BS EN ISO 10140-2.  
Test date 09/12/2022 by Building Research Establishment Ltd (BRE).

## 2000 ROUTING DETAIL

## 2500 ROUTING DETAIL





New product of the year -  
Link Vent 4000

Window component  
of the year

# Link Vent 4000

## 4000 VENT

Equivalent Area 4000mm<sup>2</sup> EQA    Equivalent Area (Route Height) 13mm 4000mm<sup>2</sup> EQA    Free Area 3954.4mm<sup>2</sup>    Acoustic D n,e,w (+/-) - vent open Rout Height 13mm: 32\* (-1;1)    Acoustic D n,e,w (+/-) - vent closed Rout Height 13mm: 41\* (0;0)

Internal				External								Ventilator			
Ventilator				Canopy				Grille (Timber, Sliding door, Sash)							
H (mm)	L (mm)	D (mm)	Weight (gram)	H (mm)	L (mm)	D (mm)	Weight (gram)	H (mm)	L (mm)	D (mm)	Weight (gram)	Attachment type	Rout H (mm)	Rout L (mm)	Stand W (mm)
18.5	380	15	21.32	18.5	380	25	39.90	20	383	5.8	9.84	Clip or Screw	13	348	14

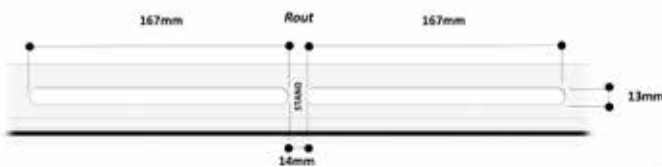
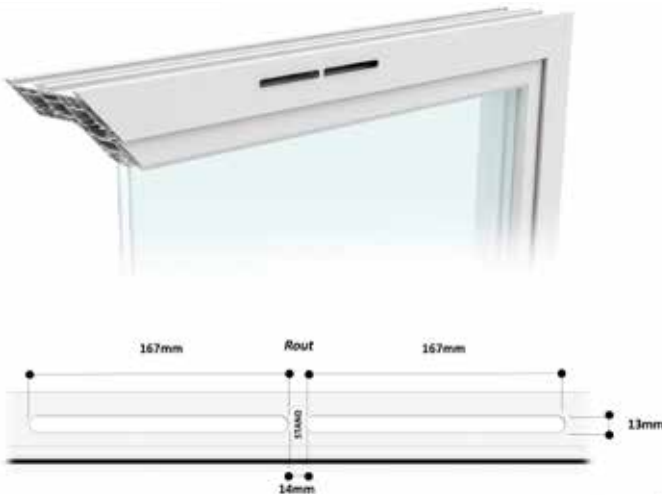
EQUIVALENT AREA – 4000 vent (4000EQA)

AIR LEAKAGE – 4000 vent **TBC** m<sup>3</sup>/h **TBC** L/s

WATERTIGHTNESS TEST TO BS EN 13141-1 – 4000 vent – Resistant to water penetration using method 1A meeting Class 9A requirement up to and at 750pa in BS EN 12208

DB RATING – BS EN ISO 10140-1:2016 (Earlier standards are withdrawn) and BS EN ISO 10140-2.  
Test date 09/12/2022 by Building Research Establishment Ltd (BRE).

## 4000 ROUTING DETAIL





Window component  
of the year

# Link Vent 5000

## 5000 VENT

Equivalent Area 5000mm <sup>2</sup> EQA	Equivalent Area (Route Height) 13mm 5000mm <sup>2</sup> EQA 10mm 4000mm <sup>2</sup> EQA	Free Area 5049mm <sup>2</sup> 3037mm <sup>2</sup>	Acoustic D n,e,w (+/-) - vent open Route Height 13mm: 31* (-1;1) Route Height 10mm: 32* (-1;1)	Acoustic D n,e,w (+/-) - vent closed Route Height 13mm: 42* (0;0) Route Height 10mm: 37* (0;0)
--	--	---	--	--

Internal				External								Ventilator			
Ventilator				Canopy				Grille (Timber, Sliding door, Sash)							
H (mm)	L (mm)	D (mm)	Weight (gram)	H (mm)	L (mm)	D (mm)	Weight (gram)	H (mm)	L (mm)	D (mm)	Weight (gram)	Attachment type	Route H (mm)	Route L (mm)	Stand W (mm)
18.5	454.5	15	60	18.5	454.5	25	49	26	436	2.5	20	Clip or Screw	13 or 10	2x204	14

EQUIVALENT AREA – 5000 vent (5000EQA)

AIR LEAKAGE – 5000 vent 1.29 m<sup>3</sup>/h 0.36 L/s

WATERTIGHTNESS TEST TO BS EN 13141-1 – 5000 vent – Resistant to water penetration using method 1A meeting Class 9A requirement up to and at 600pa in BS EN 12208 - 13mm rout (900pa on a 10mm rout)

DB RATING – BS EN ISO 10140-1:2016 (Earlier standards are withdrawn) and BS EN ISO 10140-2.

Test date 09/12/2022 by Building Research Establishment Ltd (BRE).

## 5000 ROUTING DETAIL

