



## Modular Vent

### Operation & Maintenance Manual

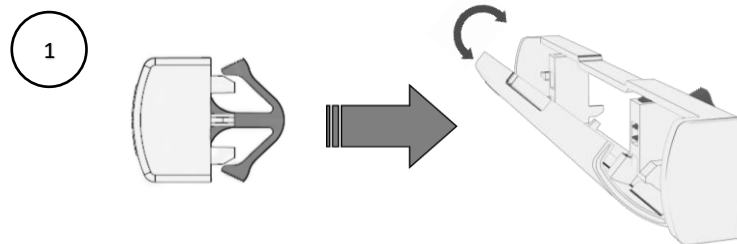
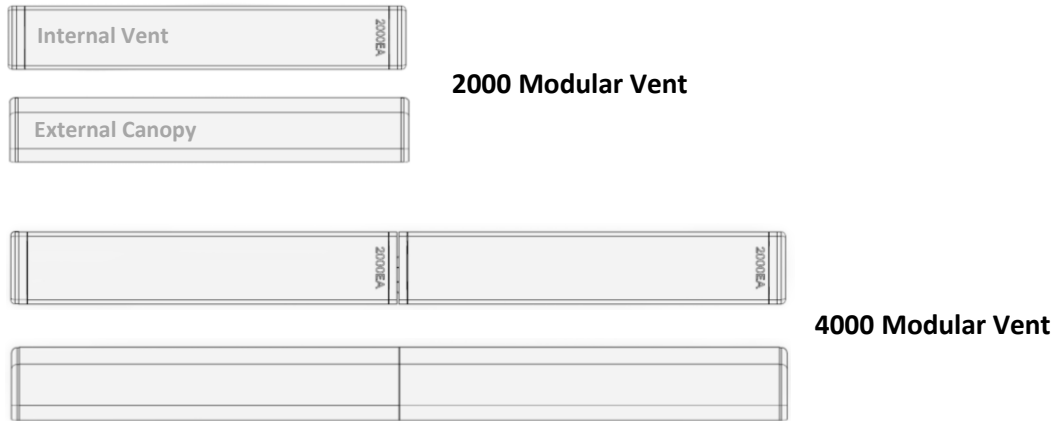


Figure1. Modular Vent Internal Lid

#### **Operation:**

- Open and close the internal ventilator by adjusting the lid to regulate the incoming airflow. *figure1.* 4000 version has two adjustable lids & 6000 version 3, etc, which operates independently to each other.

#### **Maintenance:**

- Every 3 months gently brush the external canopy with a hand brush to remove any cobwebs and wipe down with soapy water using a damp cloth.
- Do not use abrasive cleaning products or abrasive cleaning materials.
- Where possible, gently open the internal vent and vacuum the cut-out rout clearing out any dust and debris for efficient performance.
- Every 3 months gently brush the internal vent with a hand brush to remove any cobwebs and wipe down with soapy water using a damp cloth.