



## Slimline Vent 2000 & 4000

### Operation & Maintenance Manual

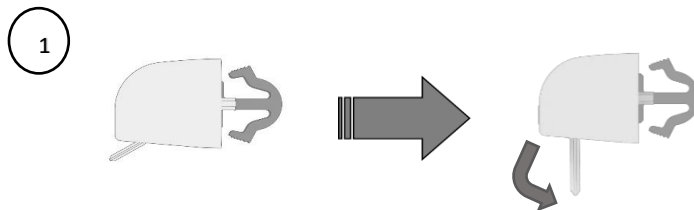
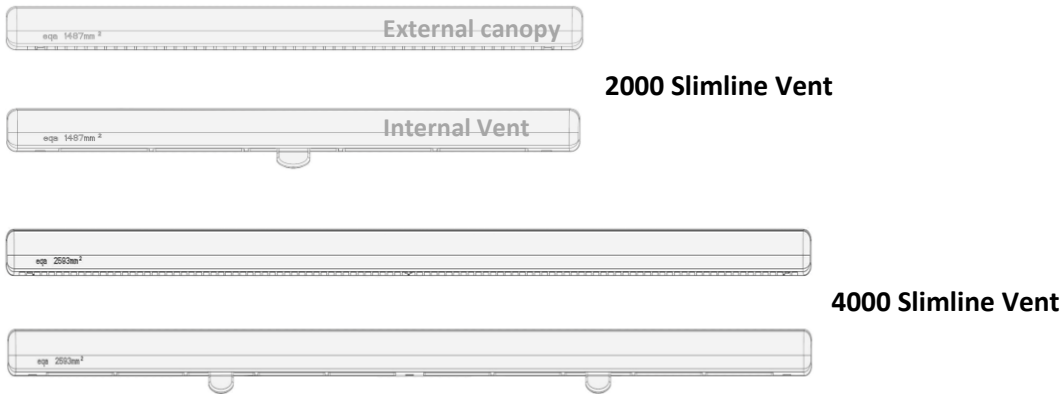


Figure1. Slimline Vent internal open and closed position

#### **Operation:**

- Open and close the internal ventilator by adjusting the closure lid to regulate the incoming airflow. *figure1*, 4000 version has two adjustable closures which operates independently to each other.

#### **Maintenance:**

- Every 3 months gently brush the external canopy with a hand brush to remove any cobwebs and wipe down with soapy water using a damp cloth.
- Do not use abrasive cleaning products or abrasive cleaning materials.
- Where possible, gently open the internal vent and vacuum the cut-out rout clearing out any dust and debris for efficient performance.
- Every 3 months gently brush the internal vent with a hand brush to remove any cobwebs and wipe down with soapy water using a damp cloth.

